



# Intensive Interaction Co-ordinator Courses

## Next Course commences:

### February 2017 with pre-course reading & preparation material

Places on the course will be limited and we recommend that you apply as soon as possible.

**Course venue:** Mount Pleasant Hotel, Belle Vue Terrace, Great Malvern, Worcestershire

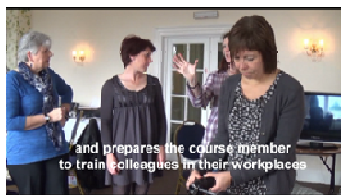
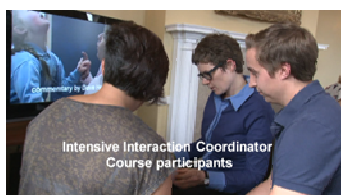
(Favourable terms for accommodation are available at the hotel – please mention Dave Hewett Courses when booking)

**Course code:** IITC (M11)

**Duration:** approx 15 months - 21 days in 7 blocks of 3 days. Course members carry out a practical, mentored Intensive Interaction project throughout the course).

**Dates:** 16th/17th/18th May 2017  
10th/11th/12th Oct 2017  
6th/7th/8th Mar 2018  
26th/27th/28th Jun 2018

11th/12th/13th July 2017  
5th/6th/7th Dec 2017  
24th/25th/26th Apr 2018



## The course is highly practical, but includes all related theory

**Fee:** The course fee is £4300. This includes lunch and refreshments during course days. The fee does not include accommodation; participants will make their own arrangements for accommodation but we have arranged an economical rate with the hotel.

**Course assessment:** Continuous assessment by course tutor(s).

## Target group:

All practitioners who work in the field: teachers and teacher assistants, speech and language therapists and assistants, psychologists, probationers and assistants, social workers, residential staff, qualified and non-qualified etc. Therefore: the course will be open to all practitioners, of whatever qualification, or holding no qualifications except for their practical experience.

**N.B.** The intention of the course is to train practitioners to be a resource to their employer and service. We do not train co-ordinators to become independent consultants.

## Course tutors:

Dave Hewett, Graham Firth, Lynnette Menzies, Julie Calveley, Amandine Mouriere

**Contact: Sarah Forde, +44 (0)1920 822027  
sarahinteract@hotmail.com**

## Target group:

All practitioners who work in the field: teachers and teacher assistants, speech and language therapists and assistants, psychologists, probationers and assistants, social workers, residential staff, qualified and non-qualified etc. Therefore: the course will be open to all practitioners, of whatever qualification, or holding no qualifications except for their practical experience.

The course includes reading and becoming familiar with the underlying research. However, course tutors are experienced in helping all practitioners can be assisted to become comfortable with the academic components.

We believe that this course will be attractive to employers in that they will see the value of having a member of staff within the establishment or service who is an II Co-ordinator.

## Course Aims:

By the end of the course an Intensive Interaction Co-ordinator will:

- be a good practitioner in the techniques of doing Intensive Interaction
- be able to train and mentor individuals and small staff teams in the practice of II
- be able to give workshops on II to groups
- be a resource to their employing organisation - have knowledge in theory and practice about approaches to supporting the implementation of II within an organisation
- have read and be knowledgeable about all publications and theories on Intensive Interaction
- be knowledgeable about much of the underlying research theory on parent-baby interaction
- be knowledgeable about many of the issues and associated theories, e.g.: *touch, age-appropriateness, developmental theories, the history of psychology and the place of II, autism theories and history, communication work in the field of SLD etc.*